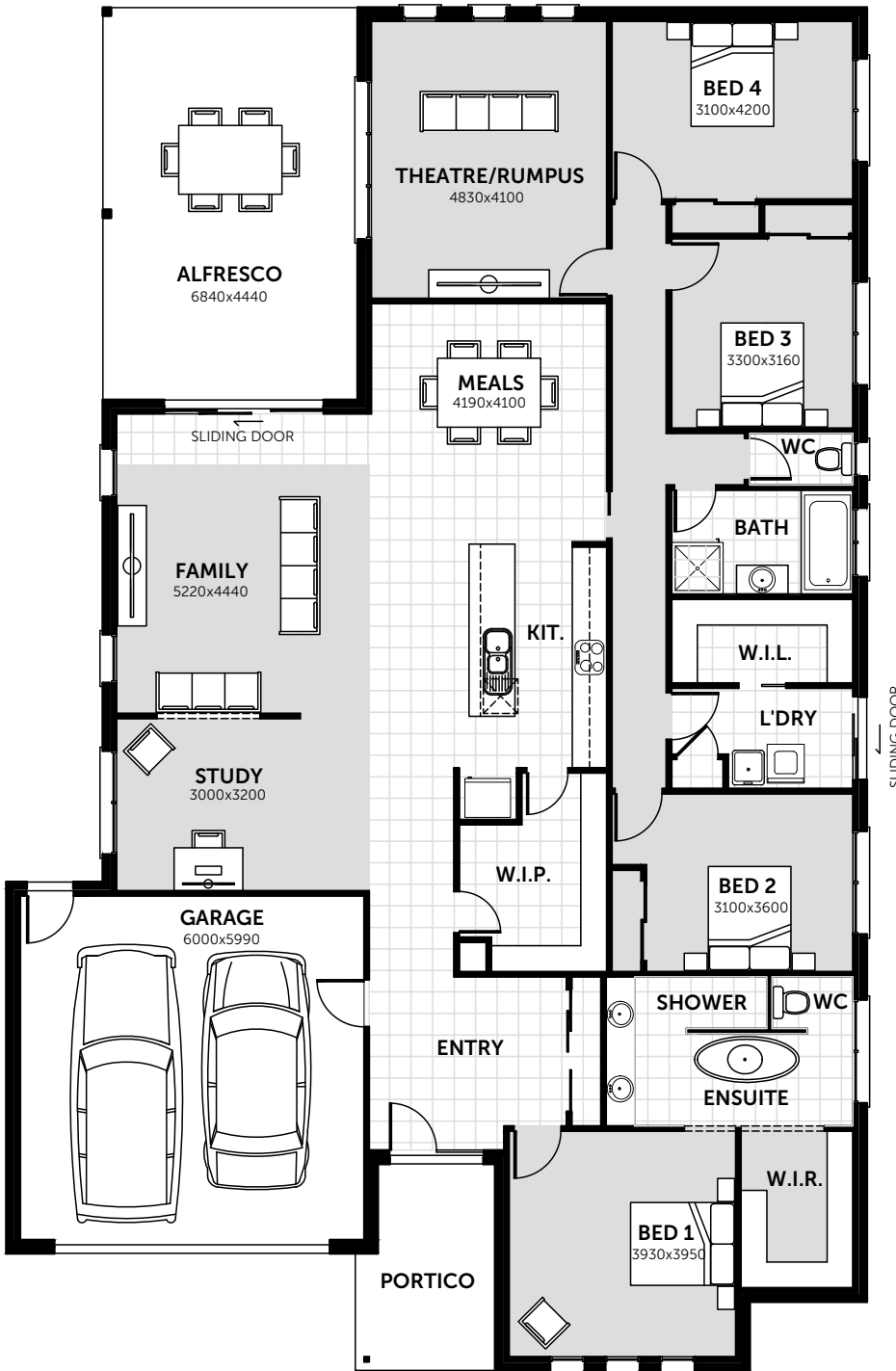


PRESIDIUM 315

House
Width
14.99m

House
Depth
23.75m



 4 |
  3 |
  2 |
  2

AREAS

LIVING:	237.3m ²	25.6sq
GARAGE:	39.7m ²	4.3sq
ALFRESCO:	30.4m ²	3.3sq
PORTICO:	8.1m ²	0.8sq
TOTAL:	315.5m²	34sq

© Hearty Homes 2020. All Rights Reserved.

Sales

P: (03) 5384 5696
E: sales@heartyhomes.com.au

Office

Hearty Homes Reception
P: (03) 5384 5696
E: reception@heartyhomes.com.au

1115 Latrobe Street,
Delacombe VIC 3356

heartyhomes.com.au

HEARTY HOMES

Love at first site.

CDB-U 48883