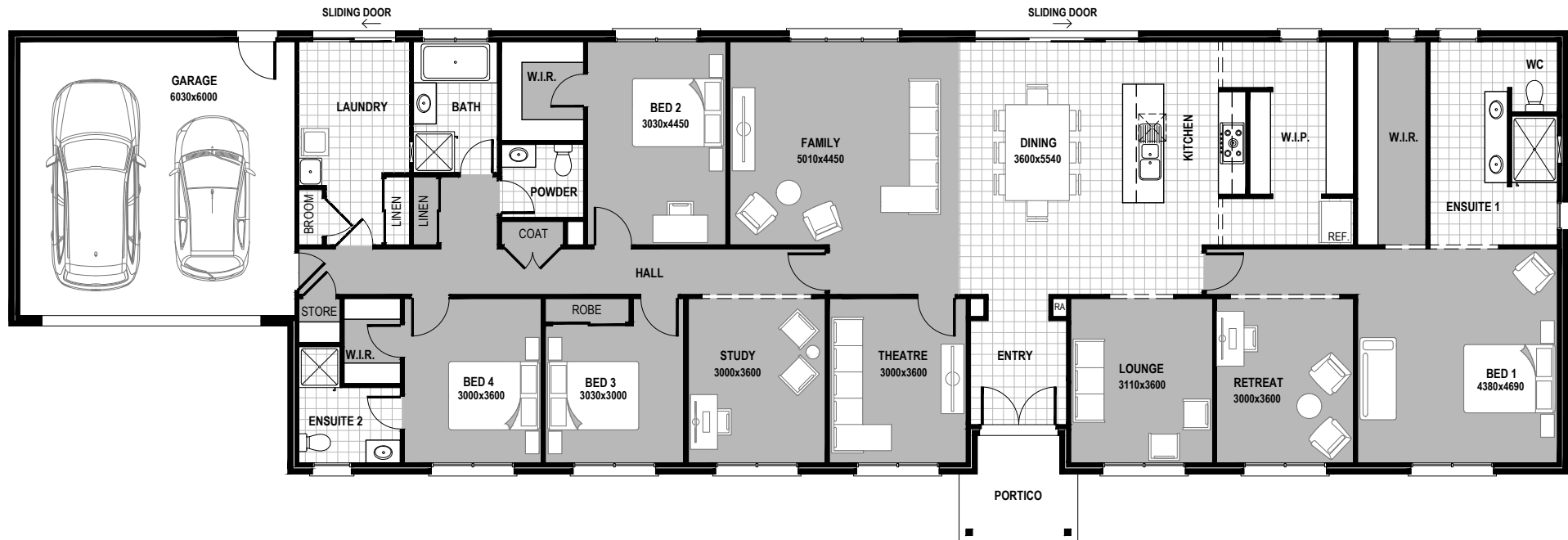


# HOMESTEAD 315

House  
Width  
34.19m

House  
Depth  
11.21m



4+1 | 
 4 | 
 3 | 
 2

## AREAS

|               |                           |               |
|---------------|---------------------------|---------------|
| LIVING:       | 269.5m <sup>2</sup>       | 29.0sq        |
| GARAGE:       | 40.8m <sup>2</sup>        | 4.4sq         |
| PORTICO:      | 5.4m <sup>2</sup>         | 0.6sq         |
| <b>TOTAL:</b> | <b>315.7m<sup>2</sup></b> | <b>34.0sq</b> |

© Hearty Homes 2020. All Rights Reserved.

## Sales

P: (03) 5384 5696  
E: sales@heartyhomes.com.au

## Office

Hearty Homes Reception  
P: (03) 5384 5696  
E: reception@heartyhomes.com.au

1115 Latrobe Street,  
Delacombe VIC 3356

[heartyhomes.com.au](http://heartyhomes.com.au)

# HEARTY HOMES

*Love at first site.*

CDB-U 48883