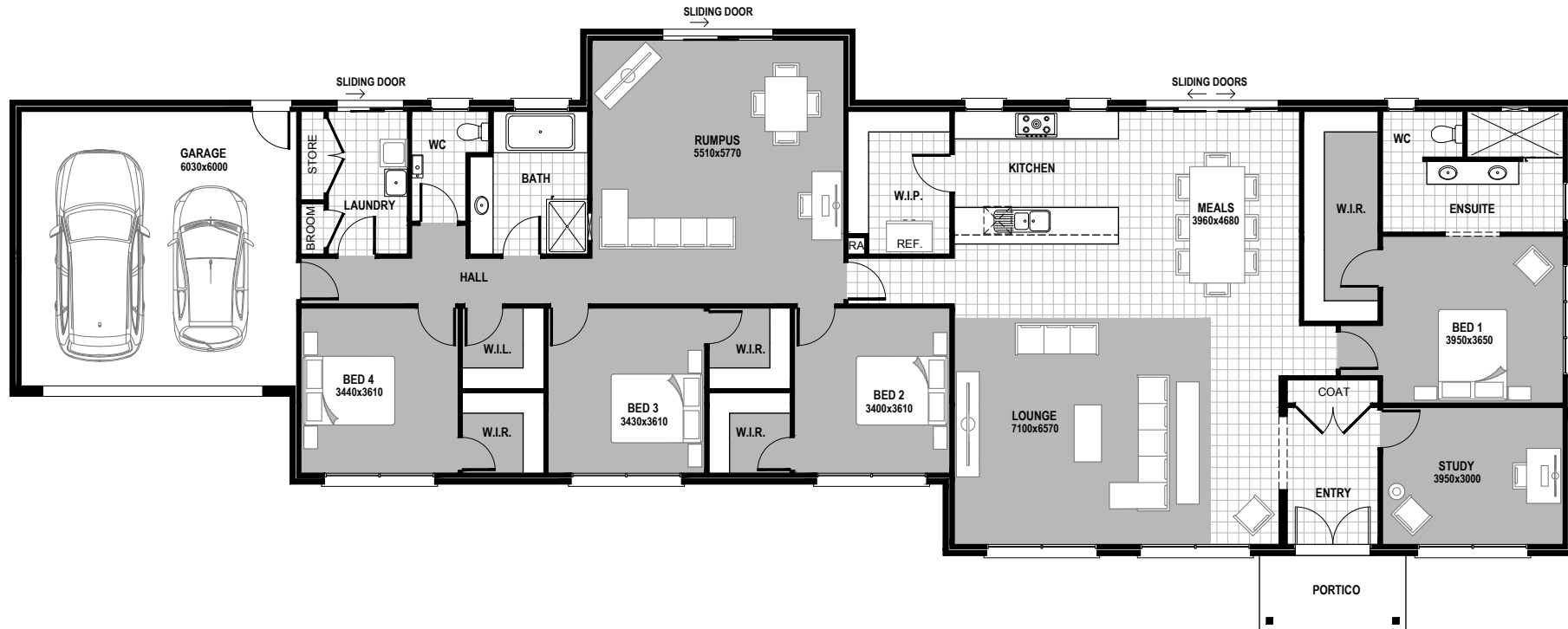


HOMESTEAD 311

House
Width
35.03m

House
Depth
13.16m



4+1 |
 2 |
 2 |
 2

AREAS

LIVING:	265.1m ²	28.5sq
GARAGE:	40.8m ²	4.4sq
PORTICO:	5.3m ²	0.6sq
TOTAL:	311.2m²	33.5sq

© Hearty Homes 2020. All Rights Reserved.

Sales

P: (03) 5384 5696
E: sales@heartyhomes.com.au

Office

Hearty Homes Reception
P: (03) 5384 5696
E: reception@heartyhomes.com.au

1115 Latrobe Street,
Delacombe VIC 3356

heartyhomes.com.au

HEARTY HOMES

Love at first site.

CDB-U 48883