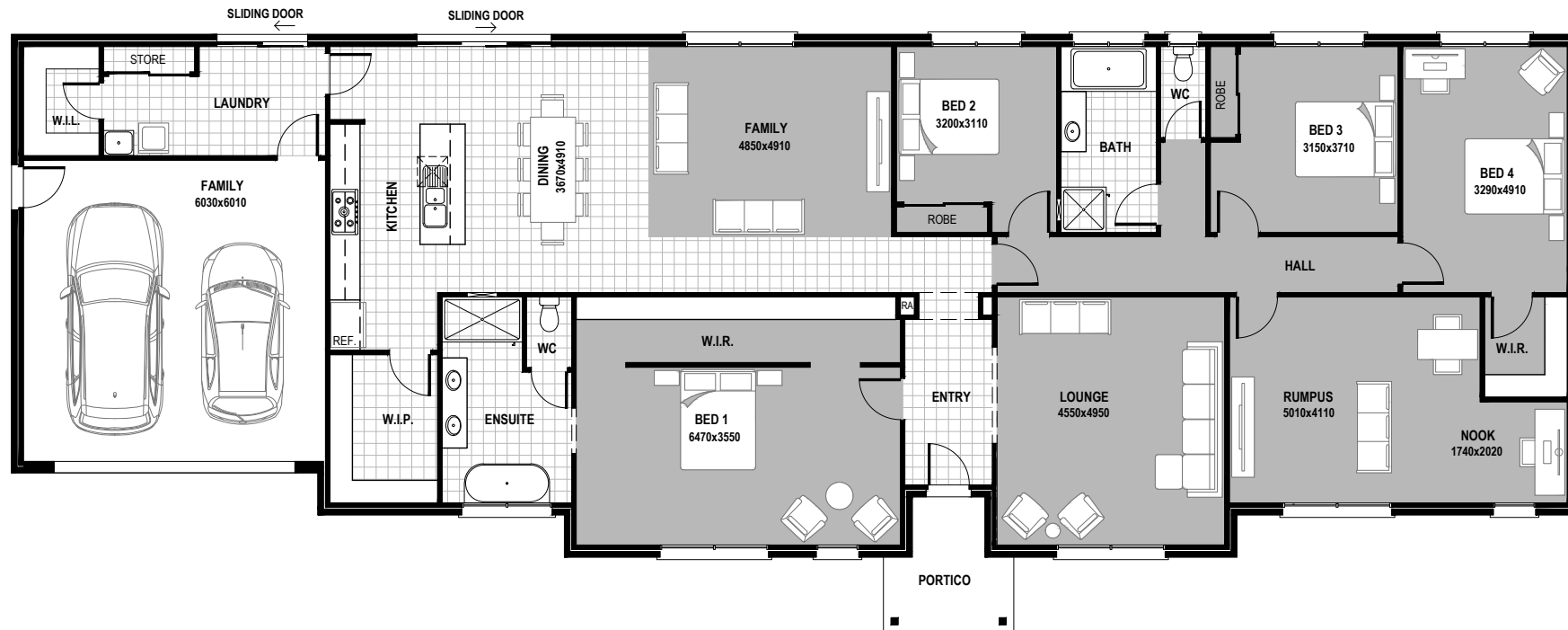


# HOMESTEAD 310

House  
Width  
31.31m

House  
Depth  
11.93m



## AREAS

LIVING:	264.9m <sup>2</sup>	28.5sq
GARAGE:	39.7m <sup>2</sup>	4.3sq
PORTICO:	5.6m <sup>2</sup>	0.6sq
<b>TOTAL:</b>	<b>310.2m<sup>2</sup></b>	<b>33.4sq</b>

© Hearty Homes 2020. All Rights Reserved.

## Sales

P: (03) 5384 5696  
E: sales@heartyhomes.com.au

## Office

Hearty Homes Reception  
P: (03) 5384 5696  
E: reception@heartyhomes.com.au

1115 Latrobe Street,  
Delacombe VIC 3356

[heartyhomes.com.au](http://heartyhomes.com.au)

# HEARTY HOMES

*Love at first site.*

CDB-U 48883