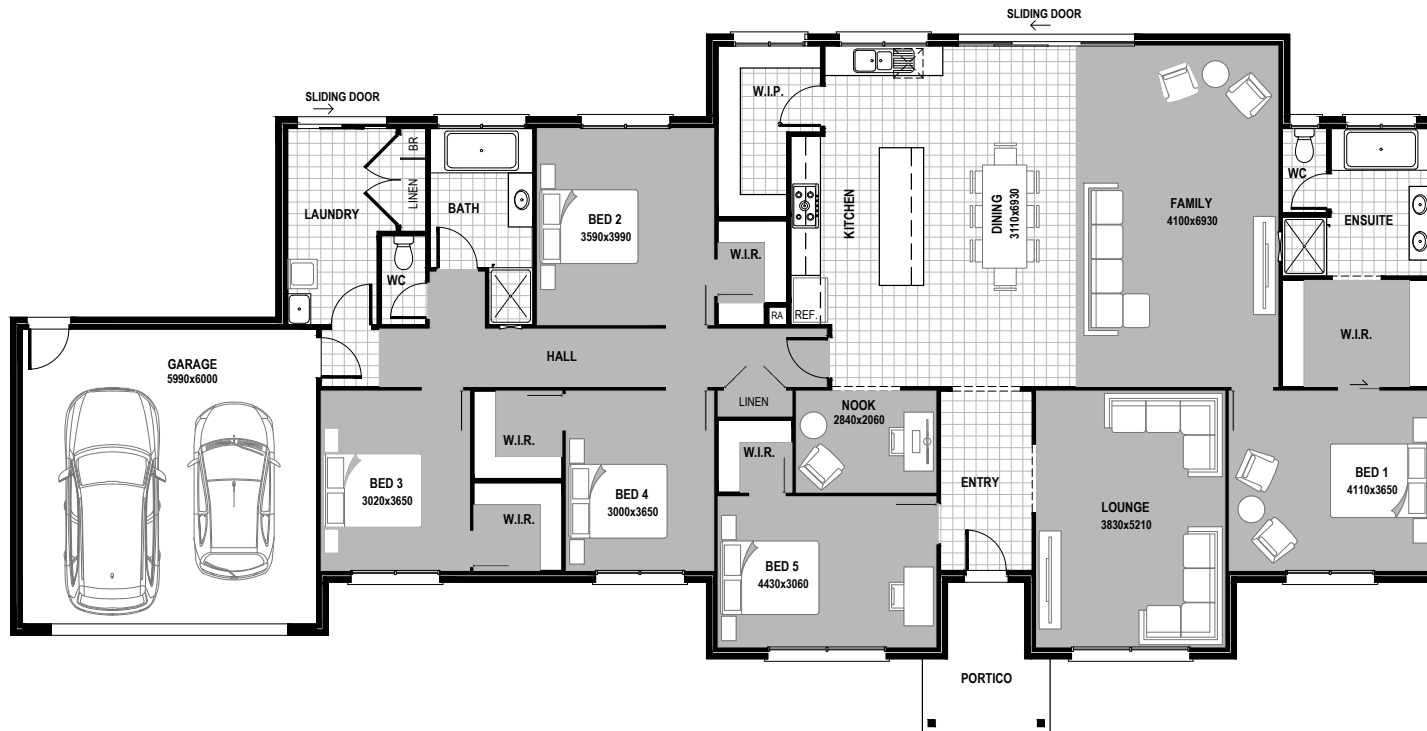


HOMESTEAD 301

House
Width
29.15m

House
Depth
14.21m



AREAS

LIVING:	254.6m ²	27.4sq
GARAGE:	40.7m ²	4.4sq
PORTICO:	6.3m ²	0.7sq
TOTAL:	301.6m²	32.5sq

© Hearty Homes 2020. All Rights Reserved.

Sales

P: (03) 5384 5696
E: sales@heartyhomes.com.au

Office

Hearty Homes Reception
P: (03) 5384 5696
E: reception@heartyhomes.com.au

1115 Latrobe Street,
Delacombe VIC 3356

heartyhomes.com.au

HEARTY HOMES

Love at first site.

CDB-U 48883