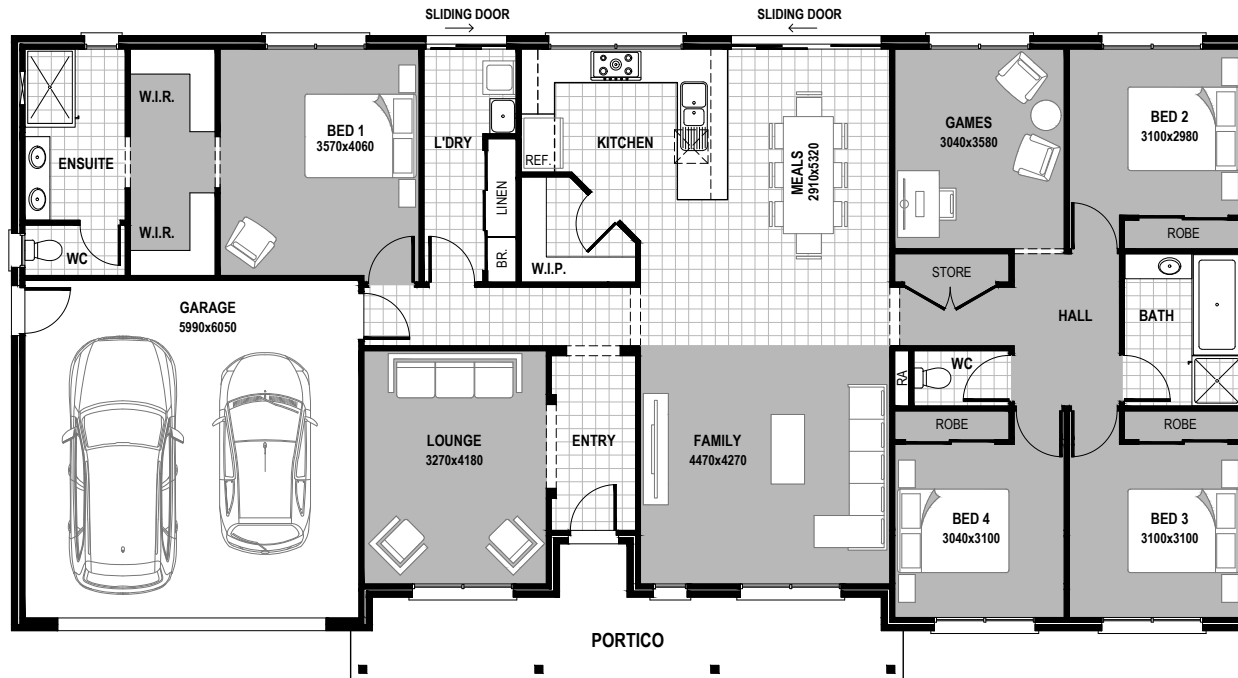


# HOMESTEAD 247

House  
Width  
22.31m

House  
Depth  
11.57m



## AREAS

LIVING:	192.1m <sup>2</sup>	20.7sq
GARAGE:	39.3m <sup>2</sup>	4.2sq
PORTICO:	15.6m <sup>2</sup>	1.7sq
<b>TOTAL:</b>	<b>247.0m<sup>2</sup></b>	<b>26.6sq</b>

© Hearty Homes 2020. All Rights Reserved.

## Sales

P: (03) 5384 5696  
E: sales@heartyhomes.com.au

## Office

Hearty Homes Reception  
P: (03) 5384 5696  
E: reception@heartyhomes.com.au

1115 Latrobe Street,  
Delacombe VIC 3356

[heartyhomes.com.au](http://heartyhomes.com.au)

# HEARTY HOMES

*Love at first site.*

CDB-U 48883