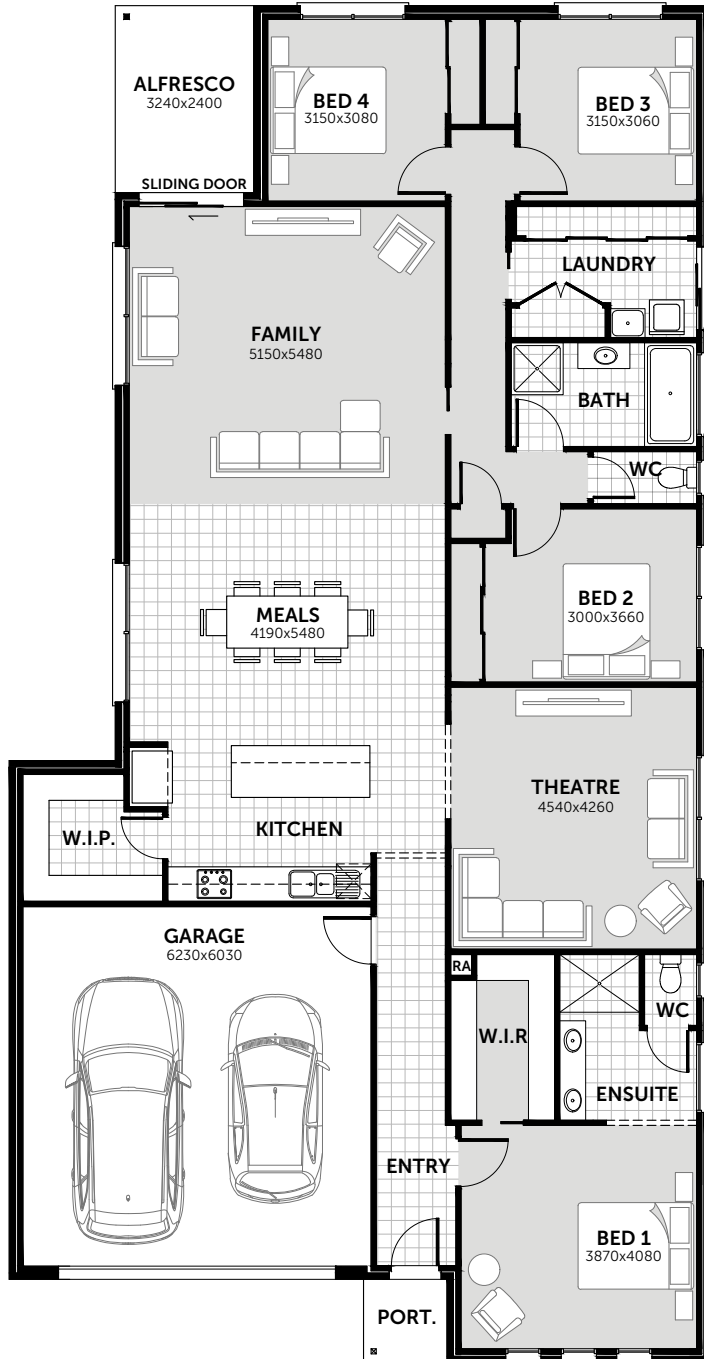


HIGHFIELD 253

House
Width
12.15m

House
Depth
23.51m



 4 |
  2 |
  2 |
  2

AREAS

LIVING:	201.8m ²	21.72sq
GARAGE:	41.1m ²	4.42sq
ALFRESCO:	7.8m ²	0.84sq
PORTICO:	2.1m ²	0.23sq
TOTAL:	252.8m²	27.21sq

© Hearty Homes 2020. All Rights Reserved.

Sales

P: (03) 5384 5696
E: sales@heartyhomes.com.au

Office

Hearty Homes Reception
P: (03) 5384 5696
E: reception@heartyhomes.com.au
1115 Latrobe Street,
Delacombe VIC 3356
heartyhomes.com.au

HEARTY HOMES

Love at first site.

CDB-U 48883