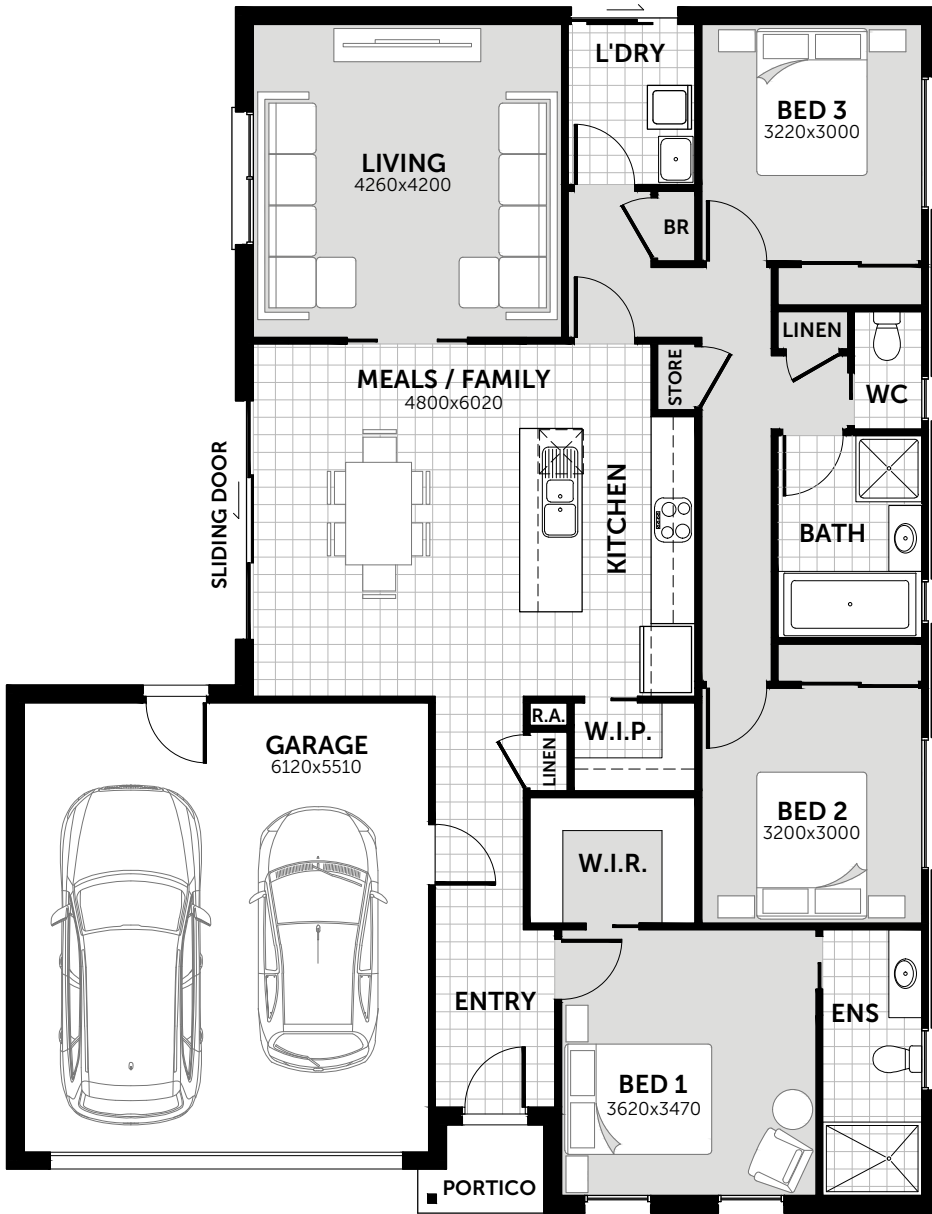


# HIGHFIELD 176

House  
Width  
12.71m

House  
Depth  
16.43m



## AREAS

LIVING:	137m <sup>2</sup>	14.7sq
GARAGE:	37.7m <sup>2</sup>	4.0sq
PORTICO:	1.8m <sup>2</sup>	0.2sq
<b>TOTAL:</b>	<b>176.5m<sup>2</sup></b>	<b>18.9sq</b>

© Hearty Homes 2020. All Rights Reserved.

## Sales

P: (03) 5384 5696  
E: sales@heartyhomes.com.au

## Office

Hearty Homes Reception  
P: (03) 5384 5696  
E: reception@heartyhomes.com.au

1115 Latrobe Street,  
Delacombe VIC 3356

[heartyhomes.com.au](http://heartyhomes.com.au)

# HEARTY HOMES

*Love at first site.*

CDB-U 48883